

Appendix 3-6

Landscape Master Plan

LAND PLANNING & DESIGN

CUNNANE STRATTON REYNOLDS
 Ardacong, Ballytrasna, Tuam, Co Galway
 Tel: 093 60854
 EMAIL galwayinfo@csrlandplan.ie

DRAWING ISSUE SHEET

Date: 08.07.19
Project: Crown Square Phase 2
Issued By: KM

Sheet No: 4
Project Number: 18375

| | | | | | | | | | | | | | | | | | | | | |
|------|----------|--|--|--|--|--|--|--|--|--|--|--|--|--|--|--|--|--|--|--|
| Date | 08.07.19 | | | | | | | | | | | | | | | | | | | |
|------|----------|--|--|--|--|--|--|--|--|--|--|--|--|--|--|--|--|--|--|--|

| Dwg. No. | Dwg. Title | | | | | | | | | | | | | | | | | | | |
|-------------|-----------------------------|---|--|--|--|--|--|--|--|--|--|--|--|--|--|--|--|--|--|--|
| 18375-3-102 | Landscape Masterplan | e | | | | | | | | | | | | | | | | | | |
| 18375-3-103 | Landscape Character Areas | e | | | | | | | | | | | | | | | | | | |
| 18375-3-104 | Landscape Masterplan Levels | e | | | | | | | | | | | | | | | | | | |
| | | | | | | | | | | | | | | | | | | | | |
| | | | | | | | | | | | | | | | | | | | | |
| | | | | | | | | | | | | | | | | | | | | |
| | | | | | | | | | | | | | | | | | | | | |
| | | | | | | | | | | | | | | | | | | | | |
| | | | | | | | | | | | | | | | | | | | | |
| | | | | | | | | | | | | | | | | | | | | |
| | | | | | | | | | | | | | | | | | | | | |
| | | | | | | | | | | | | | | | | | | | | |
| | | | | | | | | | | | | | | | | | | | | |
| | | | | | | | | | | | | | | | | | | | | |
| | | | | | | | | | | | | | | | | | | | | |
| | | | | | | | | | | | | | | | | | | | | |
| | | | | | | | | | | | | | | | | | | | | |
| | | | | | | | | | | | | | | | | | | | | |
| | | | | | | | | | | | | | | | | | | | | |
| | | | | | | | | | | | | | | | | | | | | |
| | | | | | | | | | | | | | | | | | | | | |
| | | | | | | | | | | | | | | | | | | | | |
| | | | | | | | | | | | | | | | | | | | | |
| | | | | | | | | | | | | | | | | | | | | |
| | | | | | | | | | | | | | | | | | | | | |
| | | | | | | | | | | | | | | | | | | | | |
| | | | | | | | | | | | | | | | | | | | | |
| | | | | | | | | | | | | | | | | | | | | |
| | | | | | | | | | | | | | | | | | | | | |
| | | | | | | | | | | | | | | | | | | | | |
| | | | | | | | | | | | | | | | | | | | | |
| | | | | | | | | | | | | | | | | | | | | |
| | | | | | | | | | | | | | | | | | | | | |
| | | | | | | | | | | | | | | | | | | | | |
| | | | | | | | | | | | | | | | | | | | | |

e - electronic issue

| Issued to | | Number of paper copies | | | | | | | | | | | | | | | | | | |
|--------------|-------|------------------------|--|--|--|--|--|--|--|--|--|--|--|--|--|--|--|--|--|--|
| Pamela Harty | McKOS | 10 | | | | | | | | | | | | | | | | | | |
| | | | | | | | | | | | | | | | | | | | | |
| | | | | | | | | | | | | | | | | | | | | |
| | | | | | | | | | | | | | | | | | | | | |
| | | | | | | | | | | | | | | | | | | | | |

- Drawing Codes:
- for information
 - for comment
 - for construction
 - for tender
 - x- for planning
 - for approval
 - other



LEGEND

- Existing trees proposed for removal
- Large 5 species Native Deciduous Trees (outside podium area)
 - Alnus glutinosa
 - Quercus petraea
- Large 5 species Native Evergreen Trees (outside podium area)
 - Pinus sylvestris
- Street Trees
 - Acer platanoides 'Columnare'
 - Tilia cordata 'Green pillar'
 - Car. pinnata 'bellula' / 'fontaine'
 - Pyrus calleryana 'Chanticleer'
- Tree in planter box
 - Betula pendula
 - Prunus laurocerasus
 - Sorbus aria
 - Sorbus aucuparia
- Trees in raised planter bed
 - Betula pendula
 - Liquidambar styraciflua
 - Quercus petraea
- Ornamental shrub mix (medium to tall height)
- Ornamental shrub mix (medium to low height)
- Ornamental climbers (& support systems) or Living 'Green wall' systems
- Formal clipped hedge
- Woodland Understorey Planting
- Grass lawn (public / communal)
- Private Outdoor Buffer Area
- Perennials & Seasonal Bulbs
- Resin bound gravel surface
- Coloured tarmac surface
- Stone / concrete paving flags
- Stone / concrete paving sets
- Private balcony decks
- Cycle racks
- Bench Seating

Indicative planting schedule

| Specimen | Specification |
|---|---|
| (A) 18-20cm girth / 4 stems / rootball or airpot | 18-20cm girth / 4 stems / rootball or airpot |
| (B) 10-12cm / 4 stems & mulchless / container or airpot | 10-12cm / 4 stems & mulchless / container or airpot |
| (C) 10-12cm / 4 stems & mulchless / container or airpot | 10-12cm / 4 stems & mulchless / container or airpot |
| (D) 10-12cm / 4 stems & mulchless / container or airpot | 10-12cm / 4 stems & mulchless / container or airpot |
| (E) 10-12cm / 4 stems & mulchless / container or airpot | 10-12cm / 4 stems & mulchless / container or airpot |
| (F) 10-12cm / 4 stems & mulchless / container or airpot | 10-12cm / 4 stems & mulchless / container or airpot |
| (G) 10-12cm / 4 stems & mulchless / container or airpot | 10-12cm / 4 stems & mulchless / container or airpot |
| (H) 10-12cm / 4 stems & mulchless / container or airpot | 10-12cm / 4 stems & mulchless / container or airpot |
| (I) 10-12cm / 4 stems & mulchless / container or airpot | 10-12cm / 4 stems & mulchless / container or airpot |
| (J) 10-12cm / 4 stems & mulchless / container or airpot | 10-12cm / 4 stems & mulchless / container or airpot |
| (K) 10-12cm / 4 stems & mulchless / container or airpot | 10-12cm / 4 stems & mulchless / container or airpot |
| (L) 10-12cm / 4 stems & mulchless / container or airpot | 10-12cm / 4 stems & mulchless / container or airpot |
| (M) 10-12cm / 4 stems & mulchless / container or airpot | 10-12cm / 4 stems & mulchless / container or airpot |
| (N) 10-12cm / 4 stems & mulchless / container or airpot | 10-12cm / 4 stems & mulchless / container or airpot |
| (O) 10-12cm / 4 stems & mulchless / container or airpot | 10-12cm / 4 stems & mulchless / container or airpot |
| (P) 10-12cm / 4 stems & mulchless / container or airpot | 10-12cm / 4 stems & mulchless / container or airpot |
| (Q) 10-12cm / 4 stems & mulchless / container or airpot | 10-12cm / 4 stems & mulchless / container or airpot |
| (R) 10-12cm / 4 stems & mulchless / container or airpot | 10-12cm / 4 stems & mulchless / container or airpot |
| (S) 10-12cm / 4 stems & mulchless / container or airpot | 10-12cm / 4 stems & mulchless / container or airpot |
| (T) 10-12cm / 4 stems & mulchless / container or airpot | 10-12cm / 4 stems & mulchless / container or airpot |
| (U) 10-12cm / 4 stems & mulchless / container or airpot | 10-12cm / 4 stems & mulchless / container or airpot |
| (V) 10-12cm / 4 stems & mulchless / container or airpot | 10-12cm / 4 stems & mulchless / container or airpot |
| (W) 10-12cm / 4 stems & mulchless / container or airpot | 10-12cm / 4 stems & mulchless / container or airpot |
| (X) 10-12cm / 4 stems & mulchless / container or airpot | 10-12cm / 4 stems & mulchless / container or airpot |
| (Y) 10-12cm / 4 stems & mulchless / container or airpot | 10-12cm / 4 stems & mulchless / container or airpot |
| (Z) 10-12cm / 4 stems & mulchless / container or airpot | 10-12cm / 4 stems & mulchless / container or airpot |

CLIPPED HEDGING

| Specimen | Specification | Density |
|------------------------|------------------|-------------|
| Buxus sempervirens | 3 pots / 20x30cm | 3 per lin m |
| Carpinus betulus | 3 pots / 20x30cm | 3 per lin m |
| Lavandula angustifolia | 3 pots / 30x45cm | 4 per lin m |
| Rosa rugosa | 3 pots / 30x45cm | 4 per lin m |

CLIMBERS

| Specimen | Specification | Density |
|----------------------------|------------------|-------------|
| Clematis integrifolia | 3 pots / 20x30cm | 3 per lin m |
| Medeola hibernica | 3 pots / 20x30cm | 3 per lin m |
| Rosa rugosa | 3 pots / 20x30cm | 3 per lin m |
| Rhododendron frigidifolium | 3 pots / 20x30cm | 3 per lin m |

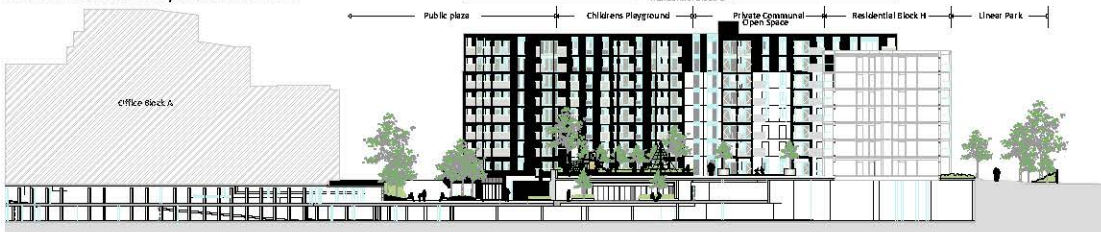
ORNAMENTAL SHRUB PLANTING to include but not limited to:

| Specimen | Spec. | Density |
|-----------------------------------|------------------|-------------|
| Berberis thunbergii | 3 pots / 30x45cm | 3 per lin m |
| Comarostaphylym | 3 pots / 30x45cm | 3 per lin m |
| Cornus americana 'Variegata' | 3 pots / 30x45cm | 3 per lin m |
| Choisya ternata | 3 pots / 30x45cm | 3 per lin m |
| Deutzia | 3 pots / 30x45cm | 3 per lin m |
| Malva | 3 pots / 30x45cm | 3 per lin m |
| Nerium oleander | 3 pots / 30x45cm | 3 per lin m |
| Prunella vulgaris | 3 pots / 30x45cm | 3 per lin m |
| Prunella laurocerasus | 3 pots / 30x45cm | 3 per lin m |
| Prunella laurocerasus 'Zabellina' | 3 pots / 30x45cm | 3 per lin m |
| Rosa rugosa 'White' | 3 pots / 30x45cm | 3 per lin m |
| Sarcococca confusa | 3 pots / 30x45cm | 3 per lin m |
| Spiraea japonica 'Hardy' | 3 pots / 30x45cm | 3 per lin m |
| Viburnum da vidii | 3 pots / 30x45cm | 3 per lin m |

Perennials & Seasonal Bulbs

| Specimen | Spec. | Density |
|----------------|------------------|-------------|
| Anemone hybrid | 3 pots / 30x45cm | 3 per lin m |
| Asperula | 3 pots / 30x45cm | 3 per lin m |
| Cheiranthemum | 3 pots / 30x45cm | 3 per lin m |
| Chrysanthemum | 3 pots / 30x45cm | 3 per lin m |
| Geranium | 3 pots / 30x45cm | 3 per lin m |
| Geranium sp. | 3 pots / 30x45cm | 3 per lin m |
| Impatiens | 3 pots / 30x45cm | 3 per lin m |
| Kalimeris | 3 pots / 30x45cm | 3 per lin m |
| Ranunculus | 3 pots / 30x45cm | 3 per lin m |
| Rosa rugosa | 3 pots / 30x45cm | 3 per lin m |

INDICATIVE SECTION / ELEVATION A-B



| REV | DATE | AMENDMENT |
|-----|------|-----------|
| | | |

CUNNANE STRATTON REYNOLDS
LAND PLANNING & DESIGN

GALWAY OFFICE
ARDAC CNO, BALLYTRASNA, TUAM, CO GALWAY
TEL 093 60864
EMAIL galwayinfo@cstrandplan.ie



| | |
|--|----------------------|
| PROJECT: CROWN SQUARE - PHASE 2 MERVUE, GALWAY. | DATE: JUNE 2019 |
| DRAWING: LANDSCAPE MASTER PLAN (PLANNING DRAWING ONLY) | SCALE: 1:500 @ A1 |
| DRAWN: CHECKED: | KM KM |
| DRAWING NO: | 18375-3-102 |

LANDSCAPE CHARACTER AREAS

Character types



Public Streetscape

Public Streetscape character area design will create an interphase between the internal development area and the external Monivea Road, framing and softening views of the development.

Landscape planting will utilise blocks of bold modern plant design, reflecting the contemporary architecture, which is cogniscent of pedestrian movement patterns.

Design and location of paving surfaces, feature street furniture and street tree planting will be coordinated in an integral and complimentary manner with the overall scheme.

Materials

- Water etched / exposed aggregate concrete paving, kerbing, steps.
- Natural granite paving, kerbing, steps.
- Root protection barriers.
- FSC Hardwood timber seating.
- Street tree species planted in constructed tree pits.

Public Linear Park & Fitness Trail

Public Linear Park & Fitness Trail character area will develop a continuous pedestrian access route around the development, (whilst also serving emergency vehicle access needs).

A series of seating opportunities and also outdoor fitness stations will both assist in 'placemaking' and offer a variety of passive and active recreation opportunities along the route...

Materials

- Coloured tarmac.
- Concrete & FSC Hardwood timber seating.
- Powder coated galvanised steel outdoor gym equipment.
- Medium to large native tree & woodland shrub species.

Public Plaza (Lower Level)

Public plaza (lower level) character area will offer high quality public realm and flexible event space within the development, facilitating pedestrian access to a number of lower ground level units. Additionally this area services emergency vehicle access. Surface treatment will seek to create a distinctive visual amenity, particularly viewed from upper floor levels. A variety of integrated seating opportunities as well as structural landscape planting and screening elements will add visual and physical structure to the space.

Materials

- Water etched / exposed aggregate concrete paving, kerbing, steps.
- Natural granite paving, kerbing, steps.
- Large scale bespoke raised planters.
- Medium to large native trees suitable to raised planter / plaza environment.

Private Sunken Courtyard Gardens

Three sunken courtyard gardens will provide secluded passive open spaces for communal use of apartment residents.

Each will be designed with its own character and offer peaceful outdoor spaces for retreat.

Materials

- Water etched / exposed aggregate concrete paving, kerbing, steps.
- Natural stone paving sets.
- Resin bound gravel.
- Shade tolerant ornamental planting.

Private Communal Open Space

Private Communal Open Space character area will offer high quality open space for communal use of apartment residents. The area will incorporate seating and a childrens playground.

Materials

- Water etched / exposed aggregate concrete paving, kerbing, steps.
- Resin bound gravel.
- Formal planting arrangements to provide structure and screening.
- Ornamental tree planting in raised planters incorporating integrated seating elements.

| REV | DATE | AMENDMENT |
|-----|------|-----------|
| | | |

CUNNAME STRATTON REYNOLDS
LAND PLANNING & DESIGN

GALWAY OFFICE
 ARDAC ONS, BALLYTRASNA, TUAM, CO GALWAY
 TEL 003 60864
 EMAIL galwayinfo@csrandp.lan.ie



| | |
|--|----------------------|
| PROJECT: CROWN SQUARE - PHASE 2 MERVUE, GALWAY. | DATE: JUNE 2019 |
| DRAWING: LANDSCAPE CHARACTER AREAS (PLANNING DRAWING ONLY) | SCALE: 1:500 @ A1 |
| DRAWN: CHECKED: | KM KM |
| DRAWING NO: | 18375-3-103 |



| REV | DATE | AMENDMENT |
|-----|------|-----------|
| | | |

CUNNAME STRATTON REYNOLDS
LAND PLANNING & DESIGN

© GALWAY OFFICE
 ARDAC CNO, BALLYTRASNA, TUAM, CO GALWAY
 TEL 093 60854
 EMAIL galwayinfo@csrlandplan.ie



| | |
|---|--------------------------------|
| PROJECT: CROWN SQUARE - PHASE 2 MERVUE, GALWAY. | DATE: JUNE 2019 |
| DRAWING: LANDSCAPE MASTER PLAN LEVELS (PLANNING DRAWING ONLY) | SCALE: 1:500 @ A1 |
| | DRAWN: CHECKED: KM KM |
| | DRAWING NO: 18375-3-104 |